

ANGEL'S FLY

- T. LANG - ①

4/4

INTRO

Handwritten musical notation for the Intro section. It consists of a treble clef staff with a 4/4 time signature and a grand staff with piano accompaniment. The piano part includes chords EbΔ7¹³ and CbΔ7/Eb. The notation includes notes, rests, and dynamic markings.

TRILL

Handwritten musical notation for the Trill section, showing a single staff with a trill symbol over a note.

1

Handwritten musical notation for the first measure of the main piece. It features a grand staff with piano accompaniment, including chords EbΔ7¹³ and CbΔ7/Eb.

Handwritten musical notation for the second measure of the main piece, showing a single staff with a trill symbol.

5

Handwritten musical notation for the fifth measure of the main piece. It features a grand staff with piano accompaniment, including chords Bb/D and Eb7/D^b (HM5).

Handwritten musical notation for the sixth measure of the main piece, showing a single staff with a trill symbol.

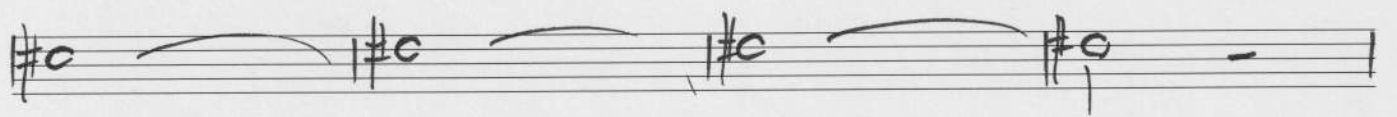
9

Handwritten musical notation for the ninth measure of the main piece. It features a grand staff with piano accompaniment, including chords Ab/C and Eb7/G[#].

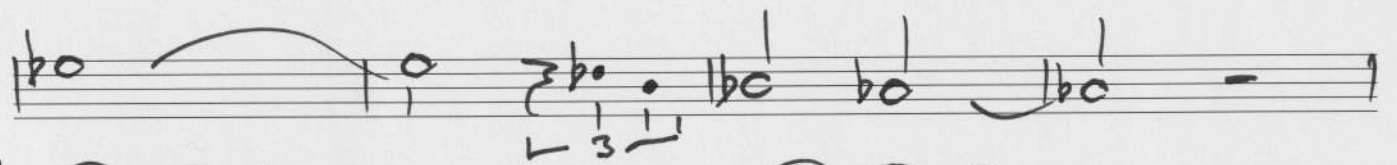
ANGEL'S FLY (2)



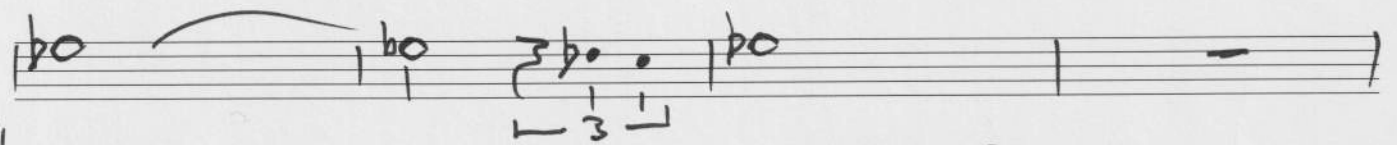
Musical notation for the first system, measures 13-16. It features two staves: a treble clef staff with notes and a bass clef staff with notes and chords. Measure 13: Treble clef notes are b_2 , b_2 , b_2 , b_2 ; bass clef notes are b_2 , b_2 , b_2 , b_2 ; chord is Ab/C . Measure 14: Treble clef notes are $\#_2$, $\#_2$, $\#_2$, $\#_2$; bass clef notes are $\#_2$, $\#_2$, $\#_2$, $\#_2$; chord is E_4^7 . Measure 15: Treble clef notes are $\#_2$, $\#_2$, $\#_2$, $\#_2$; bass clef notes are $\#_2$, $\#_2$, $\#_2$, $\#_2$; chord is $\#_2^+$. Measure 16: Treble clef notes are $\#_2$, $\#_2$, $\#_2$, $\#_2$; bass clef notes are $\#_2$, $\#_2$, $\#_2$, $\#_2$; chord is $\#_2$.



Musical notation for the second system, measures 17-20. It features two staves: a treble clef staff with notes and a bass clef staff with notes and chords. Measure 17: Treble clef notes are $\#_2$, $\#_2$, $\#_2$, $\#_2$; bass clef notes are $\#_2$, $\#_2$, $\#_2$, $\#_2$; chord is B_3^7 . Measure 18: Treble clef notes are $\#_2$, $\#_2$, $\#_2$, $\#_2$; bass clef notes are $\#_2$, $\#_2$, $\#_2$, $\#_2$; chord is $\#_2^+$. Measure 19: Treble clef notes are $\#_2$, $\#_2$, $\#_2$, $\#_2$; bass clef notes are $\#_2$, $\#_2$, $\#_2$, $\#_2$; chord is $\#_2$. Measure 20: Treble clef notes are $\#_2$, $\#_2$, $\#_2$, $\#_2$; bass clef notes are $\#_2$, $\#_2$, $\#_2$, $\#_2$; chord is $\#_2$.



Musical notation for the third system, measures 21-24. It features two staves: a treble clef staff with notes and a bass clef staff with notes and chords. Measure 21: Treble clef notes are b_2 , b_2 , b_2 , b_2 ; bass clef notes are b_2 , b_2 , b_2 , b_2 ; chord is E_b-7 . Measure 22: Treble clef notes are b_2 , b_2 , b_2 , b_2 ; bass clef notes are b_2 , b_2 , b_2 , b_2 ; chord is Ab^7 . Measure 23: Treble clef notes are b_2 , b_2 , b_2 , b_2 ; bass clef notes are b_2 , b_2 , b_2 , b_2 ; chord is b_2^+ . Measure 24: Treble clef notes are b_2 , b_2 , b_2 , b_2 ; bass clef notes are b_2 , b_2 , b_2 , b_2 ; chord is b_2 .



Musical notation for the fourth system, measures 25-28. It features two staves: a treble clef staff with notes and a bass clef staff with notes and chords. Measure 25: Treble clef notes are b_2 , b_2 , b_2 , b_2 ; bass clef notes are b_2 , b_2 , b_2 , b_2 ; chord is D_b^7 . Measure 26: Treble clef notes are b_2 , b_2 , b_2 , b_2 ; bass clef notes are b_2 , b_2 , b_2 , b_2 ; chord is B_b^7 . Measure 27: Treble clef notes are b_2 , b_2 , b_2 , b_2 ; bass clef notes are b_2 , b_2 , b_2 , b_2 ; chord is B_b^7 . Measure 28: Treble clef notes are b_2 , b_2 , b_2 , b_2 ; bass clef notes are b_2 , b_2 , b_2 , b_2 ; chord is B_b^7 .

Musical staff with notes and a triplet of eighth notes.

Handwritten measure number **29**. Piano accompaniment with chords **F#** and **B7sus4 (A4/B)**.

Musical staff with notes.

Handwritten measure number **32**. Piano accompaniment with chords **EΔ7** and **D7sus4 (CΔ7/D)**.

Musical staff with notes and a triplet of eighth notes.

Handwritten measure number **37**. Piano accompaniment with chords **G7sus4** and **CΔ7**.

Musical staff with notes.

Handwritten measure number **41**. Piano accompaniment with chords **A_b** and **CΔ7**. Ends with a double bar line and a circled cross symbol.

45

Handwritten musical notation for measures 45-47. Measure 45 features a treble clef with a melodic line and a bass clef with a chordal accompaniment. Chords are labeled Bb7 and Ab. Measure 46 is a whole rest. Measure 47 features a treble clef with a melodic line and a bass clef with a chordal accompaniment. Chords are labeled Ab and Bb.

IMPRO ON FORTI



Handwritten musical notation for measure 48, featuring a treble clef with a melodic line.

Handwritten musical notation for measures 49-50. Measure 49 features a treble clef with a melodic line and a bass clef with a chordal accompaniment. Chords are labeled Ab. Measure 50 features a treble clef with a melodic line and a bass clef with a chordal accompaniment. Chords are labeled CA.

Handwritten musical notation for measure 51, featuring a treble clef with a melodic line.

Handwritten musical notation for measures 52-53. Measure 52 features a treble clef with a melodic line and a bass clef with a chordal accompaniment. Chords are labeled Ab. Measure 53 features a treble clef with a melodic line and a bass clef with a chordal accompaniment. Chords are labeled C. The word "FINE" is written above the staff.

Empty musical staves at the bottom of the page.